

P.  
B.

# FUTURA

## ALL WOOD

Contemporary-style laminated wood window with asymmetrical doors, and external central trim

WWW.PEFINESTRE.IT

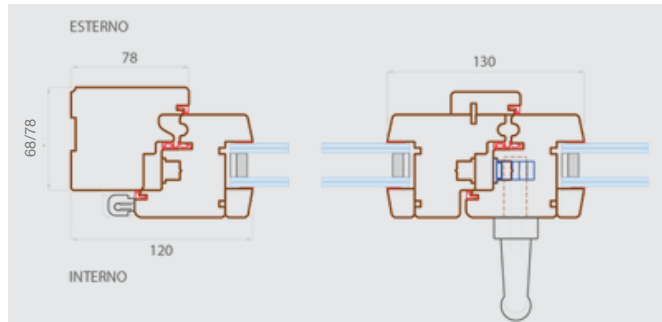
PEF

# FUTURA

## ALL WOOD

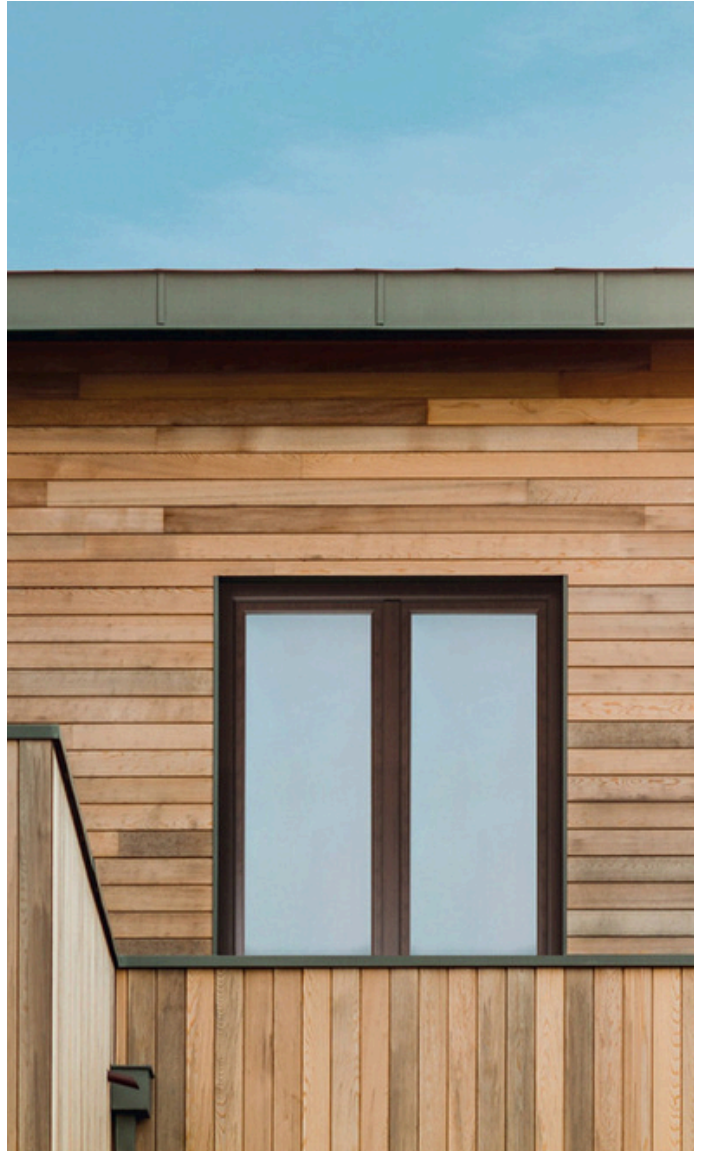
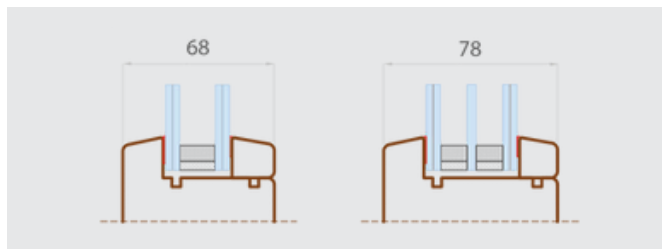
### SECTIONS

Sash with internal and external strip and central handle



### THICKNESS

Frame and sash section dimensions



### AVAILABLE STYLES

**INSIDE** The internal wood style is determined by the shape of the glazing bead and is available in the following versions:



**OUTSIDE** The external wood style is determined by the shape of the glazing bead and is available in the following versions:





## FEATURES



### LAMINATED WOOD

Laminated wood is the only material that can guarantee durability, eco-sustainability, resistance, and stability over time, in addition to the possibility of renewing and keeping the product looking new over time.



### MECHANICAL ASSEMBLY

Transom and mullion are assembled through mechanical joining, ensuring the possibility of on-site intervention in case of assistance and the need for profile replacement.



### COLOMBO DESIGN HANDLE

Robortquattro model Martellina DK handle by Colombo Design, standard in satin chrome brass (other models available upon request) with a 10-year warranty on the finish.



### STRUCTURAL SEALING OF INSULATING GLAZING

Structural sealing and bonding of the insulating glazing through 3M double-sided tape, ensuring maximum adhesion of the insulating unit and sealing against infiltrations, maximum resistance against burglary attempts, and structural stability of the doors.



### ENERGY GLASS INSULATING UNIT®

Insulating glass unit with black warm-edge spacer and Planitherm Infinity coating by Saint Gobain, low-emissivity, and selective (Ug: 1.0 W/m²K for single glazing and Ug: up to 0.5 W/m²K for double glazing).



### WOOD PAINTING

Treatment carried out with ecological water-based products to eliminate solvent emissions in the air and environment. Process executed through two impregnating and intermediate coats using float coating and a spray finishing cycle. RAL-colored products receive an additional finishing coat.

As wood is a natural material, any chromatic differences in the product are not considered defects but are justified by the different behavior of wood species to paints in staining cycles.



### GASKETS

Three thermo-acoustic gaskets in black closed-cell TPE with memory return (two inserted peripherally on the sash, one inserted peripherally on the frame).



### HINGES

Three-dimensional adjustable hinges with sash/tilt mechanism and standard micro-ventilation; silver-colored PVC hinge covers. Lever rod for lower and upper closure of the passive door. Upon request, it is possible to install concealed hardware. Steel Cremonese lock with 2 anti-burglary locking points (optionally upgradable to security class RC3).



### WARRANTIES

Thanks to the performance qualities and reliability of our windows, we have obtained prestigious certifications from international institutes and offer a 10-year warranty on our products and a 10-y warranty on the painting, according to the terms and conditions of PBFinestre.

## TECHNICAL DATA

#### Air Permeability Resistance Class\*

(according to the UNI EN 1026 – 2001 test standard and the UNI EN 12207 – 2000 classification standard)

#### Class 4

Indicates how much the fixture is permeable to air passing through it at a pressure of 600 Pa, which corresponds to a wind speed of 115 km/h.

#### Water Tightness Resistance Class \*

(according to the UNI EN 1027 – 2001 test standard and the UNI EN 12208 – 2000 classification standard)

#### E750

Indicates the fixture's ability not to be penetrated by water under a pressure of 750 Pascal.

#### Wind Load Resistance Class\*

(according to the UNI EN 12211 – 2001 test standard and the UNI EN 12210 – 2000 classification standard)

up to 2.1 m² Class C5  
above 2.1 m² up to 2.5 m² Class C4

Indicates the fixture's ability to resist the wind pressure at a specific speed

#### Acoustic Reduction Certification\*\*

- up to 43dB for sections with a thickness of 68mm  
(with glass 44.1 stadipl silence Planitherm Infinity+12 argon gas +4+12 argon gas +33.1 stadipl protect)
- up to 44dB for sections with a thickness of 78mm  
(with glass 44.1 stadipl silence Planitherm Infinity+12 argon gas +4+12 argon gas +33.1 stadipl protect)

#### Thermal Performance Certifications\*\*

#### Achievable Uw values:

in the version with a thickness of 68mm  
in the version with a thickness of 78mm

**1.2 W/m²K**  
**0.9 W/m²K**

Solar Factor: **G= 0,35**

#### Declaration of European Conformity



#### CE Mark

Products conforming to the European standard EN 14351-1. All our windows are CE marked, according to the law, to ensure maximum peace of mind and security in your home.

\*as per certifications in our possession issued by the ROSENHEIM Institute

\*\* as per certifications issued by the GIORDANO Institute



Descriptions are not binding. The company reserves the right to make any necessary modifications. PB FINESTRE WINDOWS AND DOORS is a trademark owned by IWDT SRL a socio unico. All rights reserved.